

Supplementary Material For:

Complete discrimination of six individuals based on high-resolution melting of hypervariable regions I and II of the mitochondrial genome

Olof Gidlöf¹, Sofia Burvall¹, Lars Edvinsson¹, Maria Montelius², Marie Allen², and Magnus Molin¹

¹AlphaHelix Molecular Diagnostics AB, Uppsala, Sweden and ²Department of Genetics and Pathology, Rudbeck Laboratory, Uppsala University, Sweden

BioTechniques 47:671-678 (August 2009) doi 10.2144/000113197

Keywords: high-resolution melting; HRM, mitochondrial DNA; mtDNA; genotyping; forensics

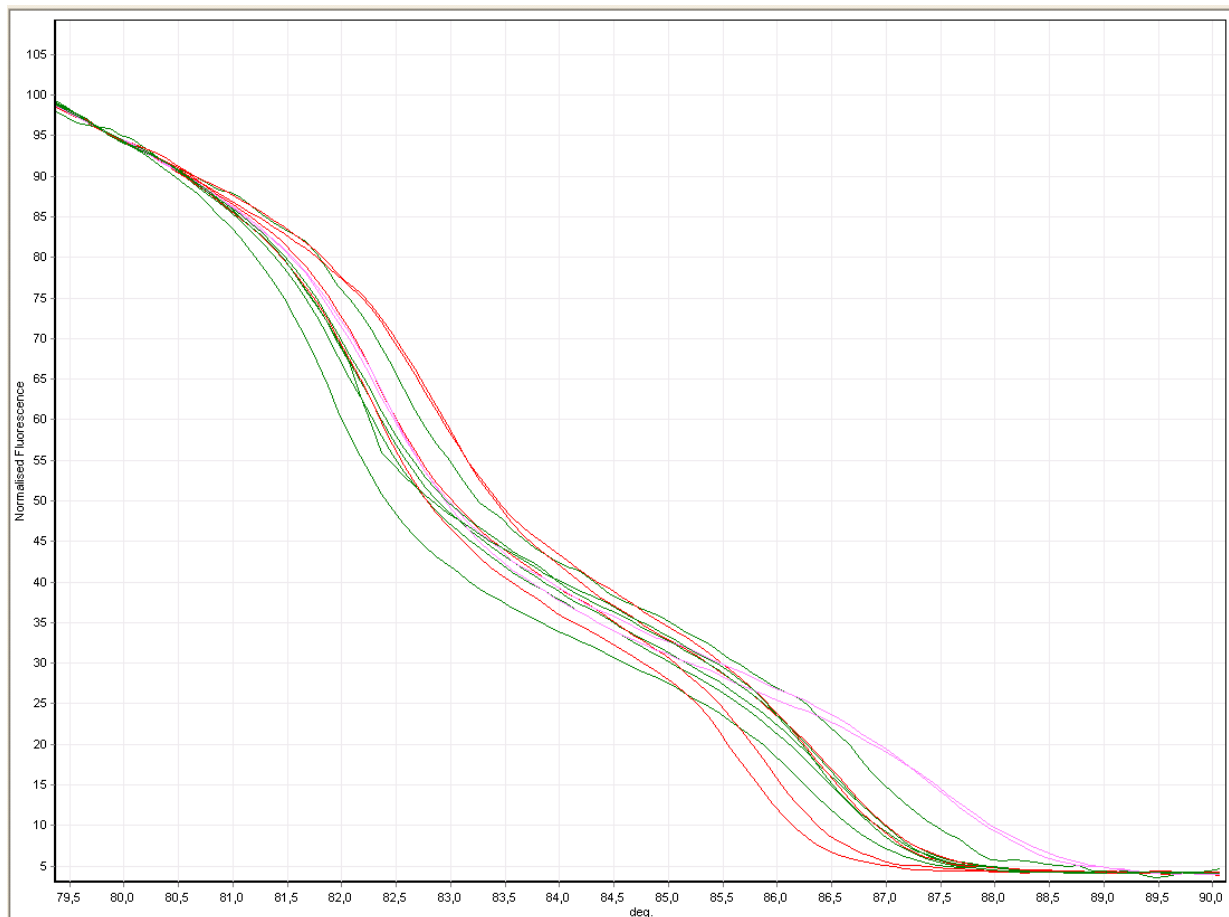


Figure S1. HVII HRM curves on Rotor-Gene 6000. Melting curves representing individuals B14, B15, and C5 are shown in green; B18 and B20 are shown in red; and individual C2 is shown in pink. Each sample was analyzed in triplicates.

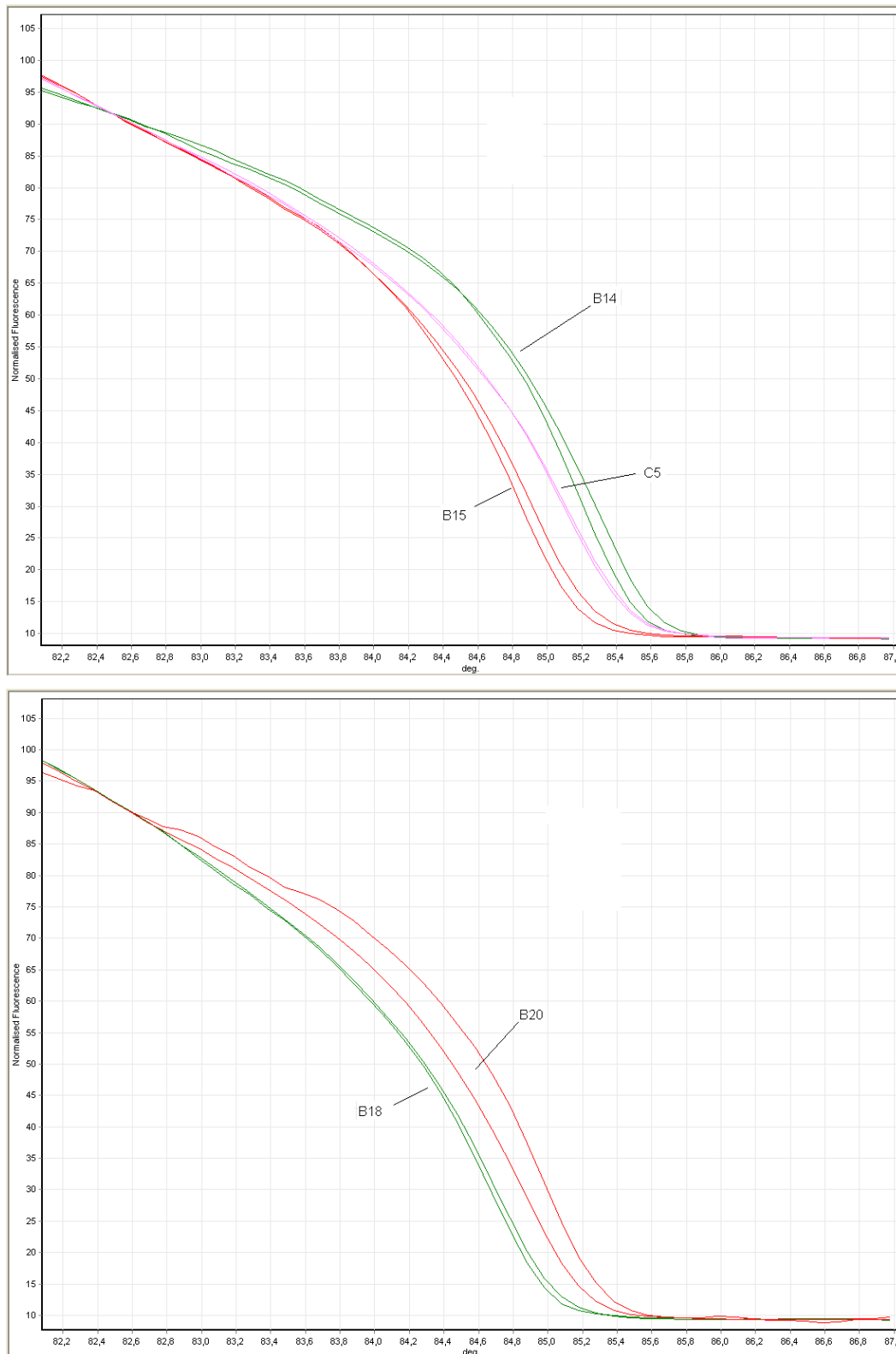


Figure S2. HVI HRM curves on Rotor-Gene 6000. The upper panel shows melting curves of individuals B14 (shown in green), B15 (shown in red), and C5 (shown in pink). The lower panel shows melting curves of individuals B18 (shown in green) and B20 (shown in red). Each sample was analyzed in duplicates.